



Propriétaire
Habitations Outaouais Métropolitain

Architectes
Mathieu Lapalme

Adresse
60, rue Fortin
Gatineau

Année de construction: 2009

Structure: Bois

Catégorie: Familles

Nombre d'étages: 2

Nombre de logements: 14

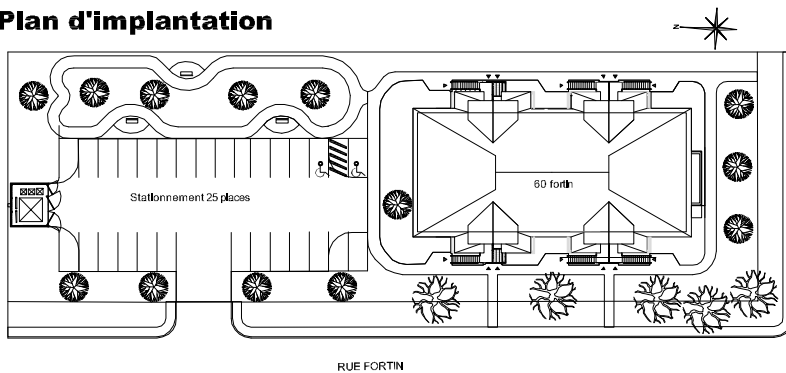
Typologie: 10 x 2cc
04 x 1cc

Salle communautaire: Non

Ascenseur: Non



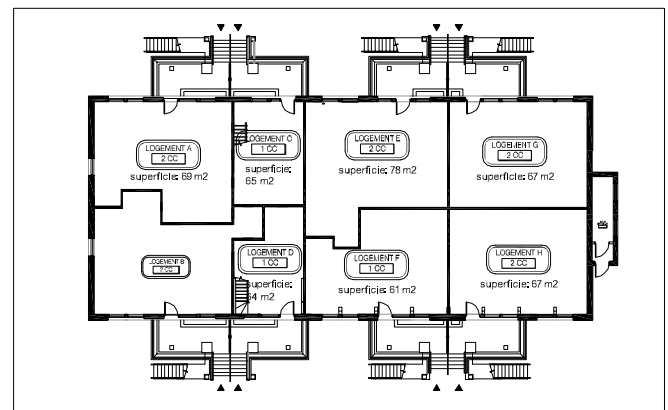
Plan d'implantation



Caractéristiques générales

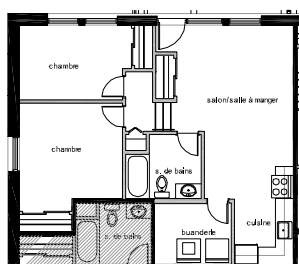
Surface du terrain: 3061 m²
Aires gazonnées: 1336 m²
Aires de stationnement: 704 m²

Plan du rez de chaussée



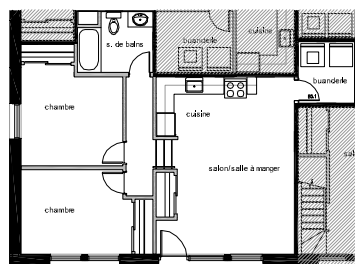
Logements détaillés de RDC

Logement A type 2CC



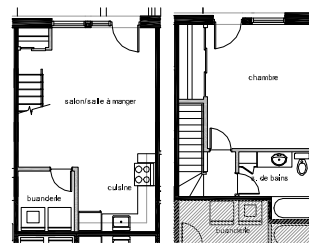
Superficie: 69 m²

Logement B type 2CC



Superficie: 70 m²

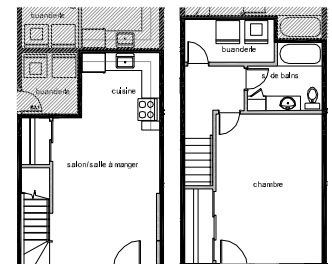
Logement C type 1CC



RDC
Superficie: 65 m²

ÉTAGE

Logement D type 1CC



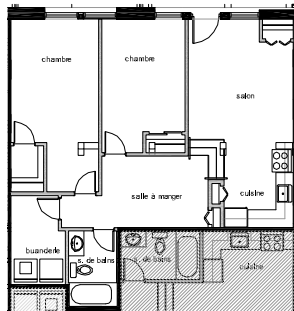
RDC
Superficie: 64 m²

ÉTAGE



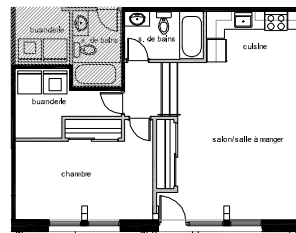
Logements détaillés de RDC(suite)

Logement E type 2CC



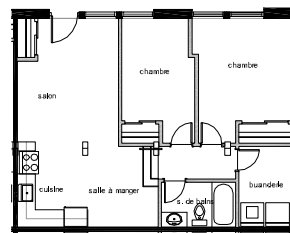
Superficie: 78 m²

Logement F type 1CC



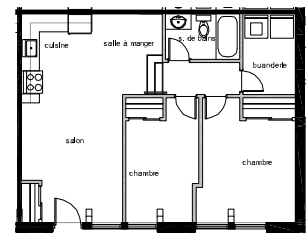
Superficie: 61 m²

Logement G type 2CC



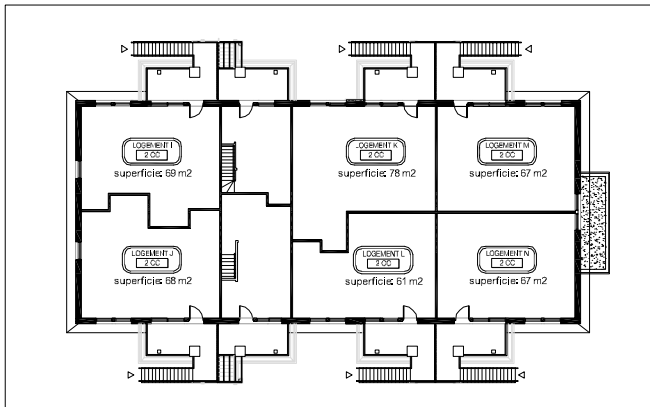
Superficie: 67 m²

Logement H type 2CC



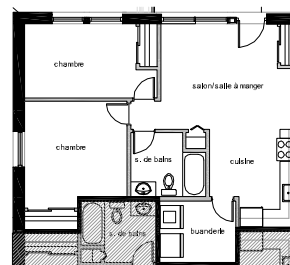
Superficie: 67 m²

Plan de l'étage



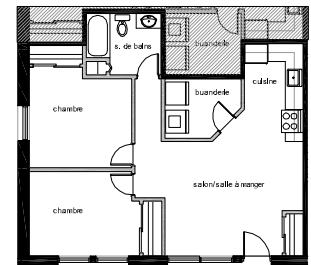
Logements détaillés de l'étage

Logement I type 2CC



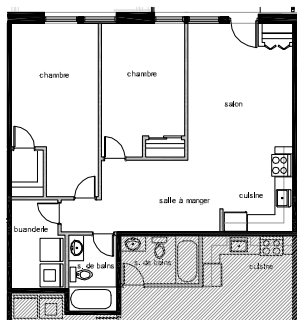
Superficie: 69 m²

Logement J type 2CC



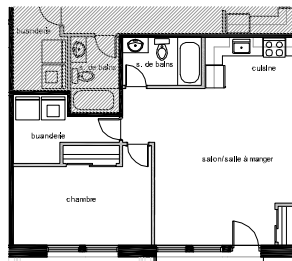
Superficie: 68 m²

Logement K type 2CC



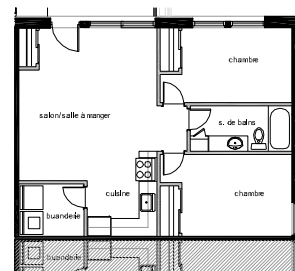
Superficie: 78 m²

Logement L type 1CC



Superficie: 61 m²

Logement M et N type 2CC



Superficie: 67 m²